

Test Report

Product Mark

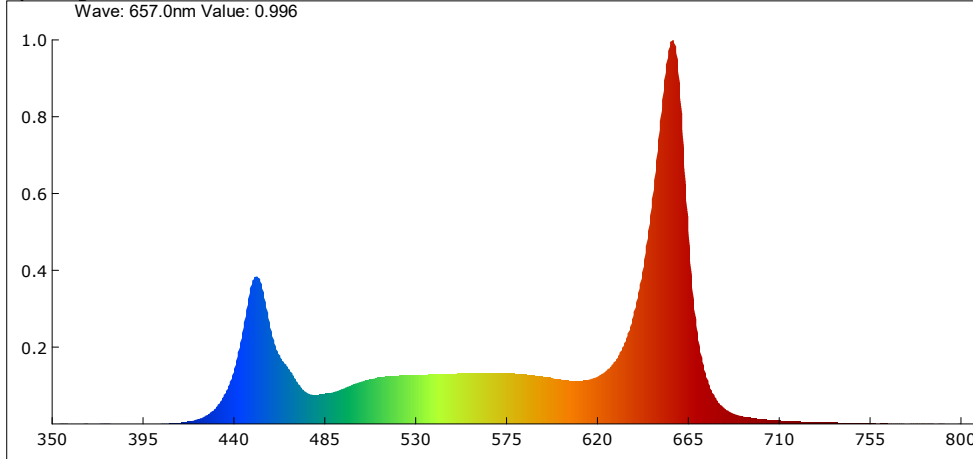
 Model: STORM 900P
 Temperature: 27°C
 Tester: admin

 Manufacture: BEARLED
 Humidity: 55%
 Test Date: 2021-09-21,23:55:59

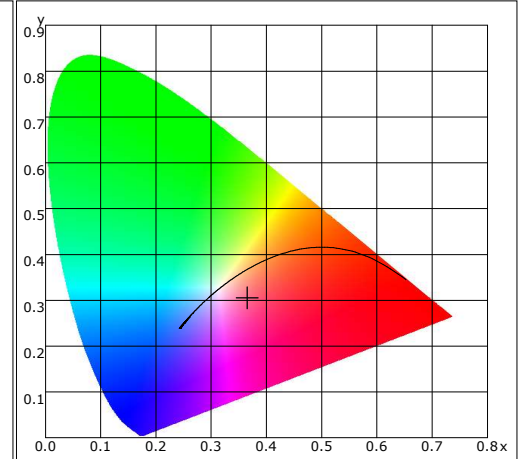
Parameter

Name	Value	Name	Value	Name	Value	Name	Value
PAR(mW/cm ²)	34.345	Euv(mW/cm ²)	0.025	Purity(%)	18.2		
PPFD(umol/m ² /s)	1663.961	Efr(mW/cm ²)	0.000	HalfWidth(nm)	19.6		
PPFD_UV(umol/m ² /s)	0.773	Ec(mW/cm ²)	34.317	Peak(nm)	657.8		
PPFD_B(umol/m ² /s)	283.630	Erb Ratio	2.465	Center(nm)	655.7		
PPFD_G(umol/m ² /s)	392.160	E(lx)	68755.12	Centroid(nm)	584.9		
PPFD_R(umol/m ² /s)	988.171	Candle E(fc)	6387.51	Color Ratio(RGB)	25.4,70.6,4.0		
PPFD_FR(umol/m ² /s)	13.785	CCT(K)	3822	CIE1931 X	120628.273		
PPFD_IR(umol/m ² /s)	0.832	Duv	-0.03340	CIE1931 Y	100666.352		
Kppfv(umol/s/klm)	24.201	CIE x,y	0.3650,0.3046	CIE1931 Z	109176.469		
YPPFD(umol/m ² /s)	1477.228	CIE u,v	0.2464,0.3085	TLCI-2012	56		
EchA(mW/cm ²)	0.558	CIE u',v'	0.2464,0.4627	Integral Time(ms)	1		
EchB(uW/cm ²)	0.166	SDCM	32.87	Peak Signal	51535		
Ep(mW/cm ²)	29.857	Ra	61.2	Dark Signal	2123		
Eb(mW/cm ²)	7.380	Ee(mW/cm ²)	34.345	Compensate level	2850		
Ey(mW/cm ²)	8.512	S/P	2.079				
Er(mW/cm ²)	18.189	Dominant(nm)	699.30				

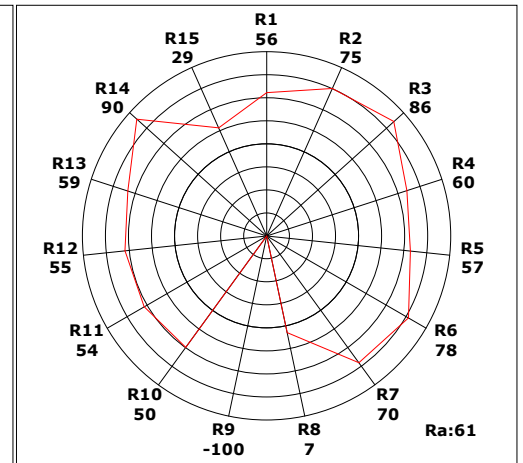
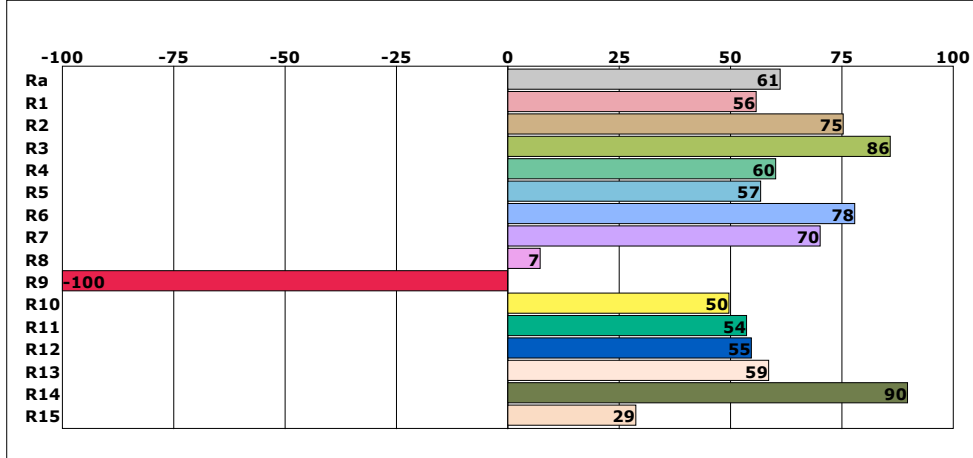
Spectrogram



CIE1931



CRI



Instrument Status

 Type: OHSP-350P
 Integral Time: 0.500ms

 SN: 0
 VPeak: 51535

 Scan Range: 350-800nm
 VDark: 2123

Remark: